

BALDOR® • RELIANCE 

Product Information Packet

FPM2513T

15//10HP,1760//1460RPM,3PH,60//50HZ,254T

Part Detail							
Revision:	D	Status:	PRD/A	Change #:		Proprietary:	No
Type:	AC	Elec. Spec:	39WGX948	CD Diagram:	CD0005	Mfg Plant:	
Mech. Spec:	39D101	Layout:	39LYD101	Poles:	04	Created Date:	02-04-2016
Base:	RG	Eff. Date:	08-22-2018	Leads:	9#12		

Specs			
Catalog Number:	FPM2513T	Front Shaft Indicator:	None
Enclosure:	OPSB	Heater Indicator:	No Heater
Frame:	254T	Insulation Class:	F
Frame Material:	Steel	Inverter Code:	Inverter Ready
Output @ Frequency:	10.000 HP @ 50 HZ	KVA Code:	F
	15.000 HP @ 60 HZ	Lifting Lugs:	Standard Lifting Lugs
Synchronous Speed @ Frequency:	1500 RPM @ 50 HZ	Locked Bearing Indicator:	No Locked Bearing
Voltage @ Frequency:	380.0 V @ 50 HZ	Motor Lead Quantity/Wire Size:	9 @ 12 AWG
	230.0 V @ 60 HZ	Motor Lead Exit:	Ko Box
	190.0 V @ 50 HZ	Motor Lead Termination:	Flying Leads
	460.0 V @ 60 HZ	Motor Type:	3936M
XP Class and Group:	None	Mounting Arrangement:	F1
XP Division:	Not Applicable	Power Factor:	87
Agency Approvals:	UL	Product Family:	Fire Pump Motor
	CSA EEV	Pulley End Bearing Type:	Ball
Auxillary Box:	No Auxillary Box	Pulley Face Code:	Standard
Auxillary Box Lead Termination:	None	Pulley Shaft Indicator:	Standard
Base Indicator:	Rigid	Rodent Screen:	None

Bearing Grease Type:	Polyrex EM (-20F +300F)	Shaft Extension Location:	Pulley End
Blower:	None	Shaft Ground Indicator:	No Shaft Grounding
Current @ Voltage:	35.000 A @ 230.0 V	Shaft Rotation:	Reversible
	29.200 A @ 190.0 V	Shaft Slinger Indicator:	No Slinger
	17.500 A @ 460.0 V	Speed Code:	Single Speed
	14.600 A @ 380.0 V	Motor Standards:	NEMA
Design Code:	B	Starting Method:	Direct on line
Drip Cover:	No Drip Cover	Thermal Device - Bearing:	None
Duty Rating:	CONT	Thermal Device - Winding:	None
Electrically Isolated Bearing:	Not Electrically Isolated	Vibration Sensor Indicator:	No Vibration Sensor
Feedback Device:	NO FEEDBACK	Winding Thermal 1:	None
Front Face Code:	Standard	Winding Thermal 2:	None

Nameplate NP3454L											
CAT.NO.	FPM2513T			CUST P/N				I.P.	23		
SPEC.	39D101X948H2			SER.NO.				FRAME	254T		
HZ	60	HP	15	RPM	1760	HZ	50	HP	10	RPM	1460
VOLTS	230/460			CODE	F	VOLTS	190/380			CODE	H
AMPS	35/17.5			DES	B	AMPS	29.2/14.6			DES	B
EFF	91	SER.F.	1.15	PF	87	EFF	90.2	SER.F.	1.15	PF	85
RATING	40C AMB-CONT			DE BRG	6309			GREASE	POLYREX EM		
BLANK				ODE BRG	6208			MTR. WT.	205		
				CLASS	F			PH	3		
				ENCL	OPSB			CC	010A		
HTR-VOLTS		HTR-AMPS		HTR-WATTS							

Parts List		
Part Number	Description	Quantity
SA314851	SA 39D101X948H2	1.000 EA
RA302341	RA 39D101X948H2	1.000 EA
HA6361A01	LIFTING LUG FOR 37, 39 & 40 FRAME ZINC	2.000 EA
HA6016	ADAPTER, CAST CONDUIT BOX	1.000 EA
09CB3002SP	CB W/1.38 LEAD HOLE FOR 37, 39, 307 & 30	1.000 EA
51XW2520A12	.25-20 X .75, TAPTITE II, HEX WSHR SLTD	2.000 EA
HW1001A25	LOCKWASHER 1/4, ZINC PLT .493 OD, .255 I	2.000 EA
WD1000B16	T&B CX70TN OR L70P TERMINAL LUG	1.000 EA
59XW2520G07	.25-20X.44,HEX SER WSHR,TAPTITE 2,GREEN	1.000 EA
39EP3200A01SP	FR/PU ENDPLATE, MACH	1.000 EA
HW5100A08	W3118-035 WVY WSHR (WB)	1.000 EA
39EP3201A13	PU ENDPLATE, MACH	1.000 EA
XY3816A12	3/8-16 FINISHED NUT	8.000 EA
09CB3501SP	CONDUIT BOX LID FOR 09CB3001 & 09CB3002	1.000 EA
51XW2520A12	.25-20 X .75, TAPTITE II, HEX WSHR SLTD	2.000 EA
HW2501G25	KEY, 3/8 SQ X 2.875	1.000 EA
LB1115N	LABEL,LIFTING DEVICE (ON ROLLS)	1.000 EA
HW4500A03	GREASE FITTING, .125 NPT 1610(ALEMITE) 8	1.000 EA
HW4500A20	1/8NPT SL PIPE PLUG	1.000 EA
HA4051A00	PLASTIC CAP FOR GREASE FITTING	1.000 EA
MG1025R44	WILKOFAS, 784.109, CARMINE RED #3002	0.050 GA
MJ1000A02	GREASE, MOBIL POLYREX EM - 124047	0.030 LB
HW4500A03	GREASE FITTING, .125 NPT 1610(ALEMITE) 8	1.000 EA
HW4500A20	1/8NPT SL PIPE PLUG	1.000 EA

Parts List (continued)		
Part Number	Description	Quantity
HA4051A00	PLASTIC CAP FOR GREASE FITTING	1.000 EA
85XU0407S04	4X1/4 U DRIVE PIN STAINLESS	2.000 EA
HA3154A09	TB STUD 3/8-16 X 16.25	4.000 EA
39AD2002A01	BAFFLE PLATE 39 OPEN, SLOTTED BAND MTRS	1.000 EA
39AD2002A01	BAFFLE PLATE 39 OPEN, SLOTTED BAND MTRS	1.000 EA
LC0005E01	CONN.DIA./WARNING LABEL (LC0005/LB1119N)	1.000 EA
NP3454L	ALUM FIRE PUMP MOTOR(LEGACY/BALDOR ONLY)	1.000 EA
39PA1000	PACKAGING GROUP 39 PRINT	1.000 EA
MN416A01	TAG-INSTAL-MAINT no wire (1200/bx) 3/19	1.000 EA

AC Induction Motor Performance Data

Record # 55290 - Typical performance - not guaranteed values

Winding: 39WGX948-R001	Type: 3936M	Enclosure: OPSB
-------------------------------	--------------------	------------------------

Nameplate Data				460 V, 60 Hz: High Voltage Connection	
Rated Output (HP)	15//10			Full Load Torque	44.3 LB-FT
Volts	230/460//190/380			Start Configuration	direct on line
Full Load Amps	35/17.5//29.2/14.6			Breakdown Torque	139 LB-FT
R.P.M.	1760//1460			Pull-up Torque	56.4 LB-FT
Hz	60//50	Phase	3	Locked-rotor Torque	80.6 LB-FT
NEMA Design Code	B	KVA Code	F	Starting Current	105 A
Service Factor (S.F.)	1.15			No-load Current	5.89 A
NEMA Nom. Eff.	91	Power Factor	87	Line-line Res. @ 25°C	0.733 Ω
Rating - Duty	40C AMB-CONT			Temp. Rise @ Rated Load	33°C
S.F. Amps				Temp. Rise @ S.F. Load	42°C
				Locked-rotor Power Factor	35
				Rotor inertia	1.57 LB-FT ²

Load Characteristics 460 V, 60 Hz, 15 HP

% of Rated Load	25	50	75	100	125	150	S.F.
Power Factor	56	77	84	87	88	88	88
Efficiency	87.6	91.5	92.2	91.4	90.4	88.9	90.8
Speed	1791	1782	1772	1761	1749	1735	1754
Line amperes	7.21	10.1	13.6	17.5	22	26.7	20.2

Performance Graph at 460V, 60Hz, 15.0HP Typical performance - Not guaranteed values

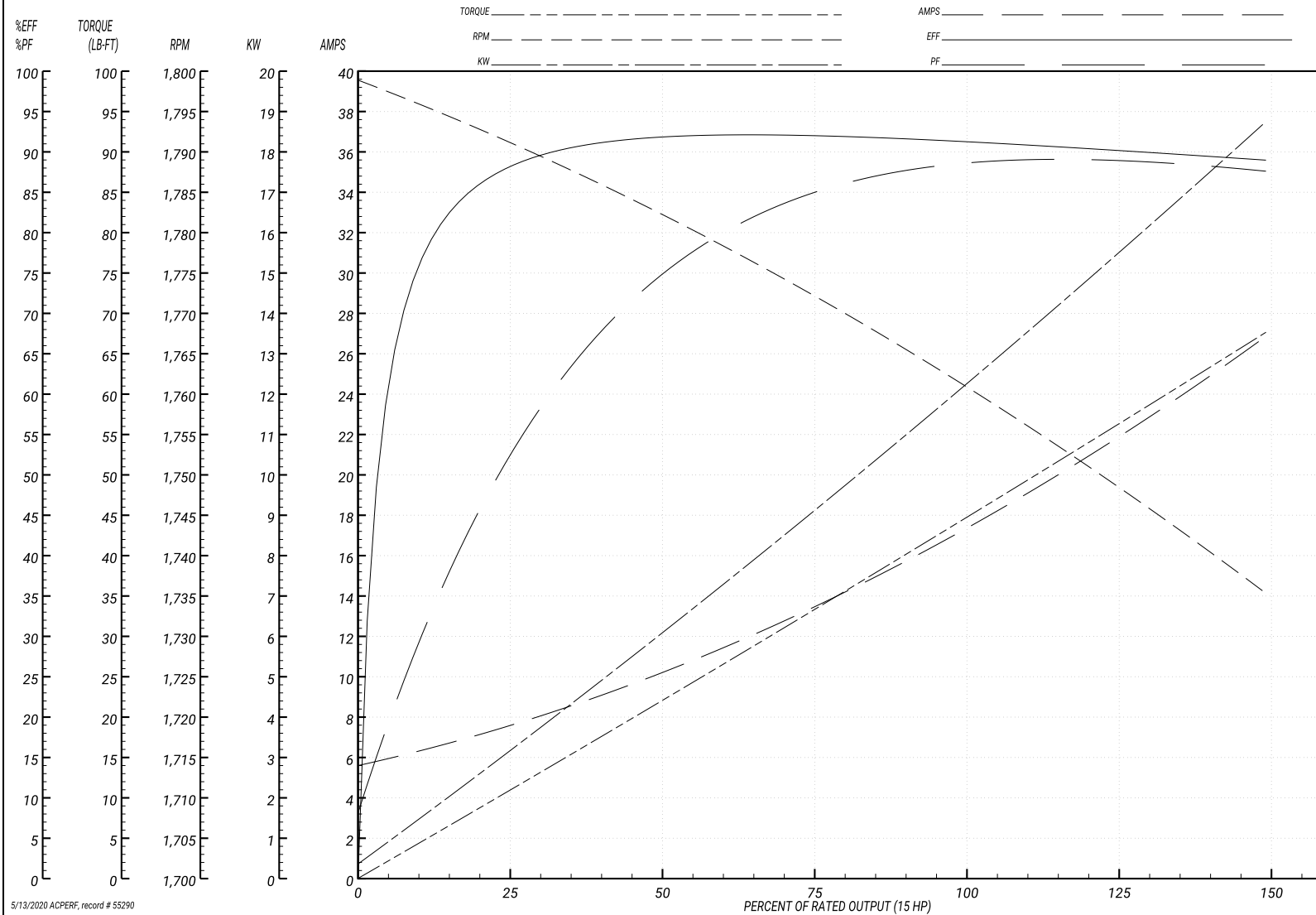
ABB Motors and Mechanical Inc.

WINDING # 39WGX948

Typical performance - not guaranteed values.

15 HP 3 PH 60 HZ 1761 RPM 460 V 3936M

TORQUES(LB-FT): PO=139 PU=56.4 LR=80.6 LRA=105



5/13/2020 ACPERF, record # 55290

AC Induction Motor Performance Data

Record # 55291 - Typical performance - not guaranteed values

Winding: 39WGX948-R001	Type: 3936M	Enclosure: OPSB
-------------------------------	--------------------	------------------------

Nameplate Data				380 V, 50 Hz: High Voltage Connection	
Rated Output (HP)	15//10			Full Load Torque	35.4 LB-FT
Volts	230/460//190/380			Start Configuration	direct on line
Full Load Amps	35/17.5//29.2/14.6			Breakdown Torque	133 LB-FT
R.P.M.	1760//1460			Pull-up Torque	57.8 LB-FT
Hz	60//50	Phase	3	Locked-rotor Torque	82.7 LB-FT
NEMA Design Code	B	KVA Code	F	Starting Current	101 A
Service Factor (S.F.)	1.15			No-load Current	5.77 A
NEMA Nom. Eff.	91	Power Factor	87	Line-line Res. @ 25°C	0.733 Ω
Rating - Duty	40C AMB-CONT			Temp. Rise @ Rated Load	25°C
S.F. Amps				Temp. Rise @ S.F. Load	31°C
				Locked-rotor Power Factor	38.8
				Rotor inertia	1.57 LB-FT ²

Load Characteristics 380 V, 50 Hz, 10 HP

% of Rated Load	25	50	75	100	125	150	S.F.
Power Factor	49	71	81	85	87	88	86
Efficiency	86.3	90.9	91.8	91.1	90.3	89	90.6
Speed	1493	1485	1477	1468	1459	1448	1463
Line amperes	6.75	8.91	11.5	14.5	18	21.5	16.6

Performance Graph at 380V, 50Hz, 10.0HP Typical performance - Not guaranteed values

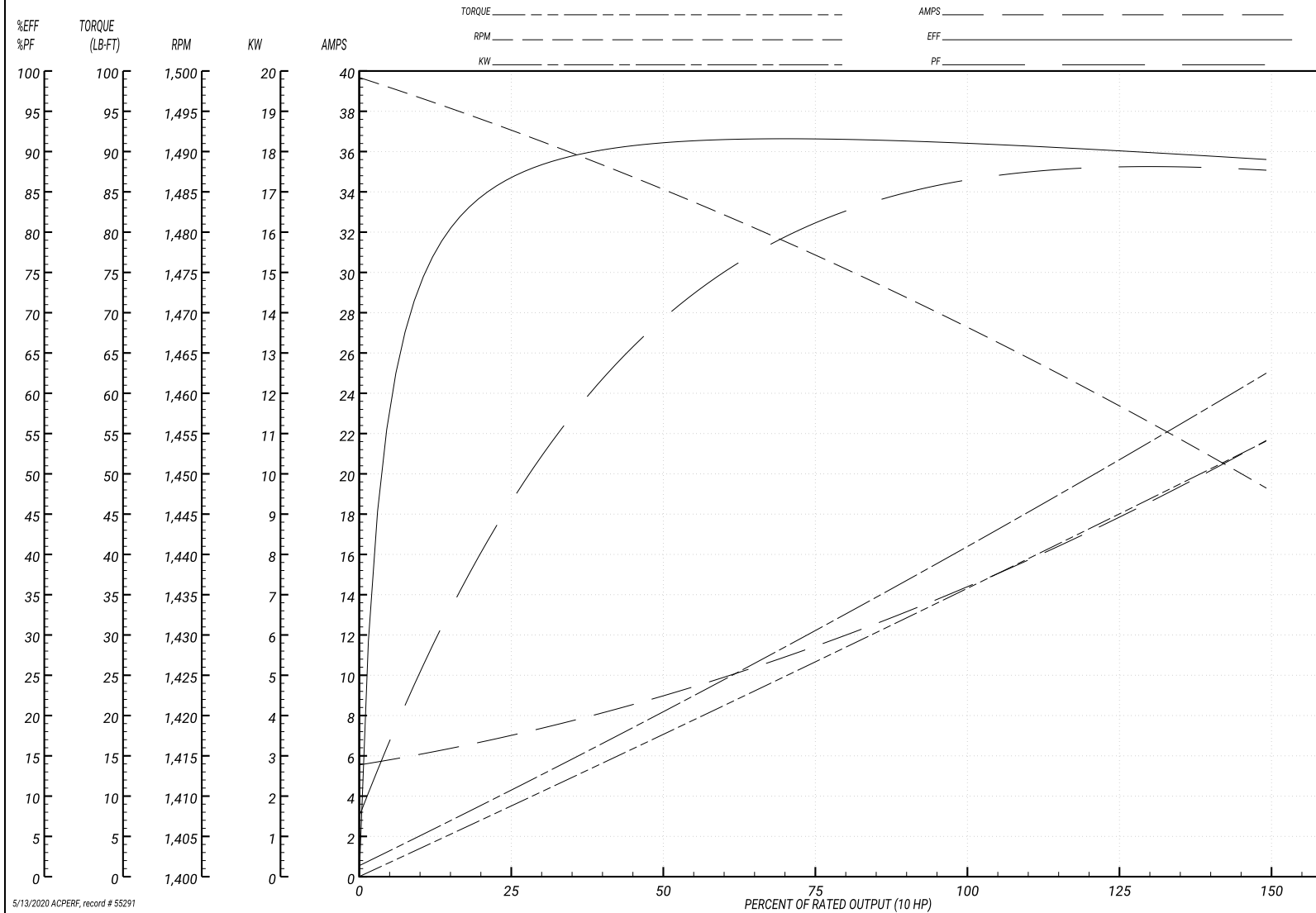
ABB Motors and Mechanical Inc.

WINDING # 39WGX948

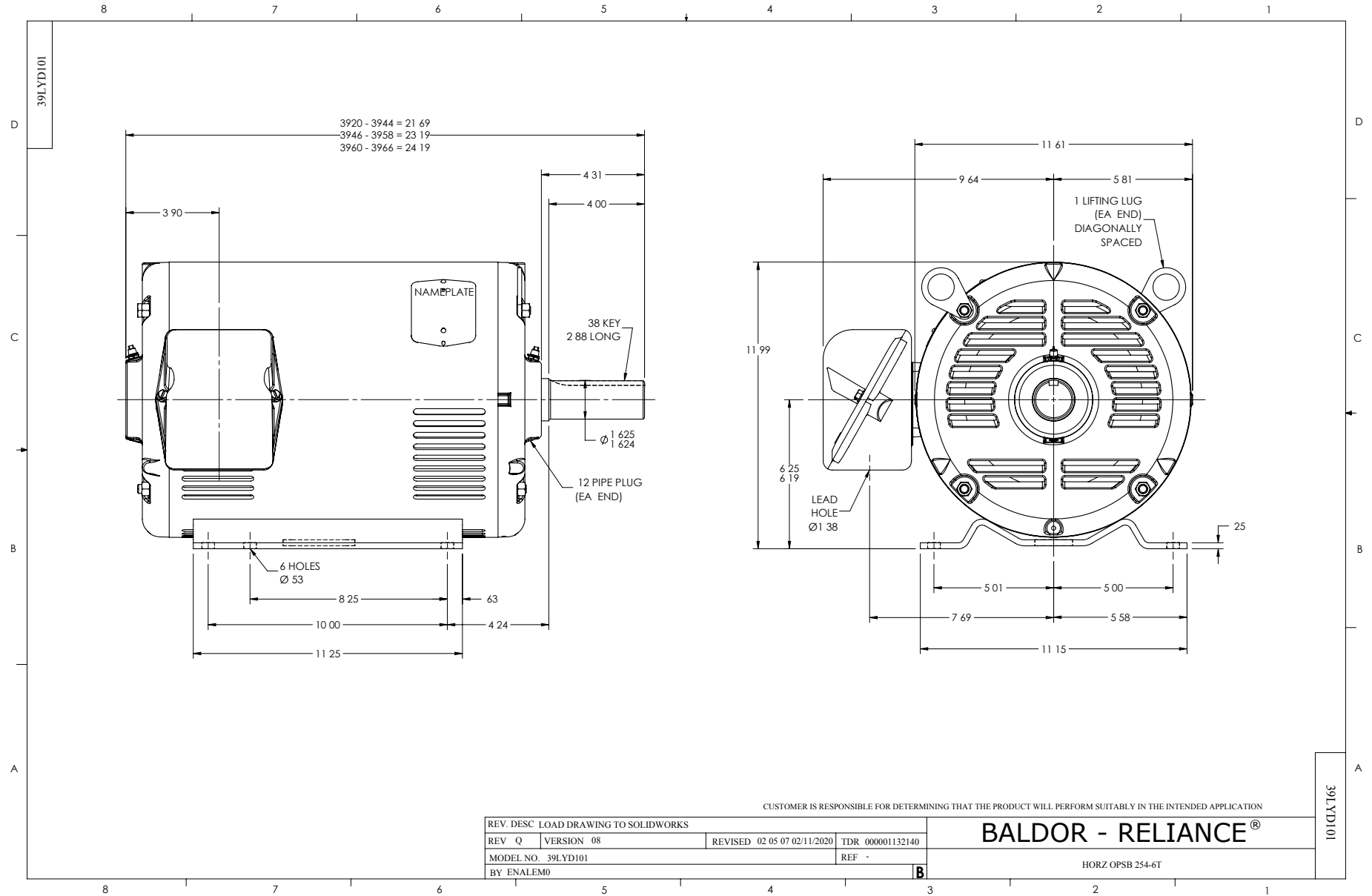
Typical performance - not guaranteed values.

10 HP 3 PH 50 HZ 1468 RPM 380 V 3936M

TORQUES(LB-FT): PO=133 PU=57.8 LR=82.7 LRA=101



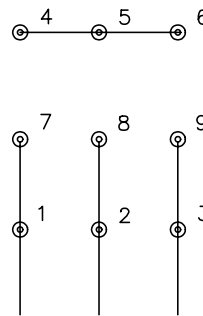
5/13/2020 ACPERF, record # 55291



CD0005

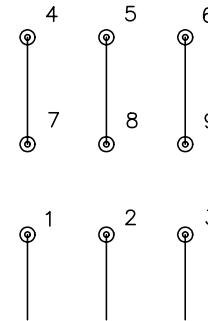


LOW VOLTAGE
(2Y)



LINE

HIGH VOLTAGE
(1Y)



LINE

NOTES:

1. INTERCHANGE ANY TWO LINE LEADS TO REVERSE ROTATION.
2. OPTIONAL THERMOSTATS ARE PROVIDED WHEN SPECIFIED.
3. ACTUAL NUMBER OF INTERNAL PARALLEL CIRCUITS MAY BE A MULTIPLE OF THOSE SHOWN ABOVE.
4. LEAD COLORS ARE OPTIONAL. LEADS MUST ALWAYS BE NUMBERED AS SHOWN.

REV. DESC: REVISE TO SHOW OPTIONAL COLORS			
REV. LTR: E	BY: JLP	REVISED: 01/19/99 10:15	TDR: 0171435
900000		FILE: AAA00005140	MDL: -
		MTL: -	

BALDOR ELECTRIC Co.

3PH, DV, 9 LEADS

CD0005

Marketing maintained PDF of MN416:

[MN416?ManNumber=MN416](#)